



Technical characteristics of Picasso DR

Picasso DR is designed as a whole, featuring a wide range of applications, ease of operation, robustness and minimal requirements for a working environment that can be used to shoot animals of different sizes. X-ray launcher for independent research and development of high power double focus combined head, flexible operation, clear image, in order to adapt to different scenes of shooting optional different mobile frame car support equipment, DBC independent research and development of pet special software, convenient operation, powerful function, has been recognized by the majority of customers..

Multi-functional appearance design (optional)

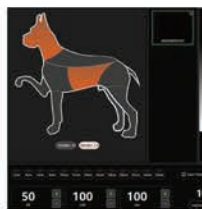
(Basic)



Intelligent Operations



● DBC V3 special software for animals



● One-key exposure collection



● Multiple image processing tools



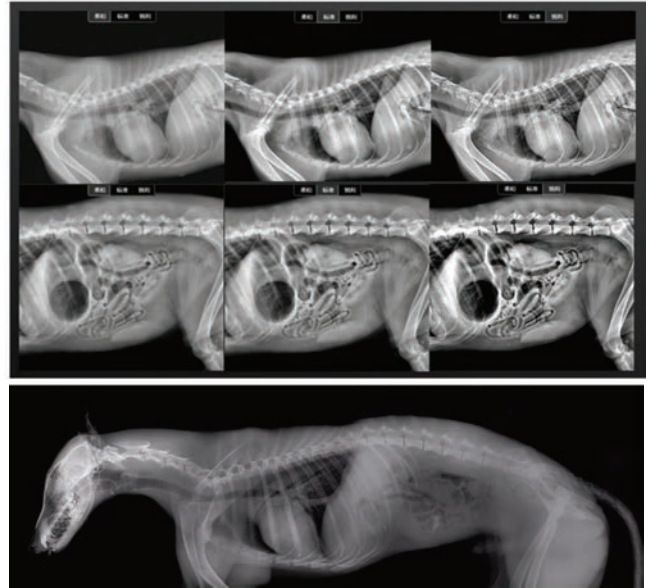
● Graphic report function



Distributed by NP Intertrade Co., Ltd
Tel: 02-003-4398, 085-136-4688, 089-890-3767,
081-306-4662, 084-333-7509

www.npintertrade.com

1. Ball tube (integrated high pressure generator)
2. Flat panel detector with high-definition images
"Foolproof operations"— SIO animal image collection workstation
3. Intelligent bone density determination (BMD)
4. High-end measurement instrument — Provide sound basis for clinical treatment and achieve more precise operations
5. Three types of image curves — Satisfaction of different clinical diagnosis
6. Intelligent large-range splicing of images



Picasso X01

Technical Specifications	Values
Flat Panel Detector	
Scintillator	CsI & a-Si
Pixel Pitch	140 μm
Number of Pixels	3072 x 3072
Active Area	17" x 17" (427*427 mm)
High Voltage Generator	
Output Power	5.3 kW
Maximum kV	125 kV
Maximum mA	100 mA
X-ray Tube	
Nominal Focal Spot Value	0.6 mm/ 1.8 mm
Anode heat Content	42 kHU

