

hawkmed

BE THEIR HEALTH GUARDIAN

HK-T100VET Infusion pump



3.5 inch touch screen easy to learn interface, short learning curve.



HK-T100VET satisfies both drug and blood transfusion to meet more clinical purposes.



The large-capacity battery of 12 hours at 25ml/h ensures safe transfer.



Optional warming strip brings one more option for heating and better heating effect.



Optional hook: support hanging on the animal cage for better space management.



Highly-advanced ingress protection IP44 effectively blocks water and dust.

Intelligent interconnection: upload information into infusion monitoring system for centralized management.

Flow rates range from 0.10ml/h to 2000.00ml/h in increments of 0.01ml/h.



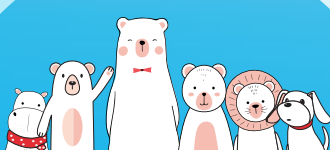
Visual & audible alarms and anti-free-flow system offer safe infusion.



More than 50000 history records provide powerful database for clinical analysis.



Double CPU system makes the running status super safe.



Distributed by **NP Intertrade Co., Ltd**

Tel: 02-003-4398, 085-136-4688, 089-890-3767, 081-306-4662, 084-333-7509

www.npintertrade.com

Model	HK-T100VET
Infuse mode	Rate mode , Time mode, Weight mode, Intermittent mode, Drug library, Drip mode
Applicable infusion set	Various brands of standard infusion sets
Accuracy	±5%
Infusion rate	(0.10-2000.00) ml/h, increment at 0.01ml/h
VTBI	(0.10~9999.99) ml
Volume infused	(0.00~99999.99) ml
KVO rate	(0.10~5.00ml/h in increments of 0.01ml/h
BOLUS rate	(0.10-2000.00)ml/h
Purge rate	(0.10-2000.00)ml/h in increments of 0.01ml/h
Bubble detection	Ultrasound sensor detection with 6 levels: 25µl-800µl
Occlusion pressure	13 levels
History record	50000
Alarm	Air bubble , Occlusion , Door open, Battery exhaust , Low battery , No tube, Finished , Almost done, No operate, AC fail, Empty , Drop abnormal, Standby end , Tube error, Battery error, Overheating, Heating bar not installed , System error. etc.
Features	Anti-Bolus, Anti-reverse detection, Double CPU, Screen lock
Optional functions	WIFI, Drop sensor, External heating
Waterproof	IP44
Power consumption	35VA
Size	145 x 103x 137 mm (pole clamp excluded)
Net weight	Approx. 1.6kg (pole clamp and battery included)
Power supply	AC :100-240V 50/60Hz DC DC12V±1.2V
Battery	Li-Polymer 7.4V 7000mAh, more than 12 hours at 25ml/h
Working environment	Temperature 5 -40 , relative humidity :10%-95%
Atmosphere pressure	57.0kPa~106.0kPa

hawkmed



Distributed by **NP Intertrade Co., Ltd**

Tel: 02-003-4398, 085-136-4688, 089-890-3767, 081-306-4662, 084-333-7509

www.npintertrade.com

